

Bearings & Dist.	N. Lat.	S. Lat.	E. Dep.	W. Dep.	E. D.D.	W. D.D.	Multiples	North Areas	South Areas
S 49 W 55		36.1		41.5		7.9	166.4-E		6007.04
N 2 1/2 W 12 1/2	11.6			4.6		46.1	120.3 E	1395.48	
S 64 W 128 3/4		56.4		115.7		120.3	000.0-E		
N 59 E 149 9/10	77.1		128.2		12.5		12.5-E	963.75	
N 83 1/2 E 34	3.8		33.6		161.8		174.3-E	662.34	
	92.5	92.5	161.18	161.18	174.3	174.3	3.8-N	3021.57	6007.04

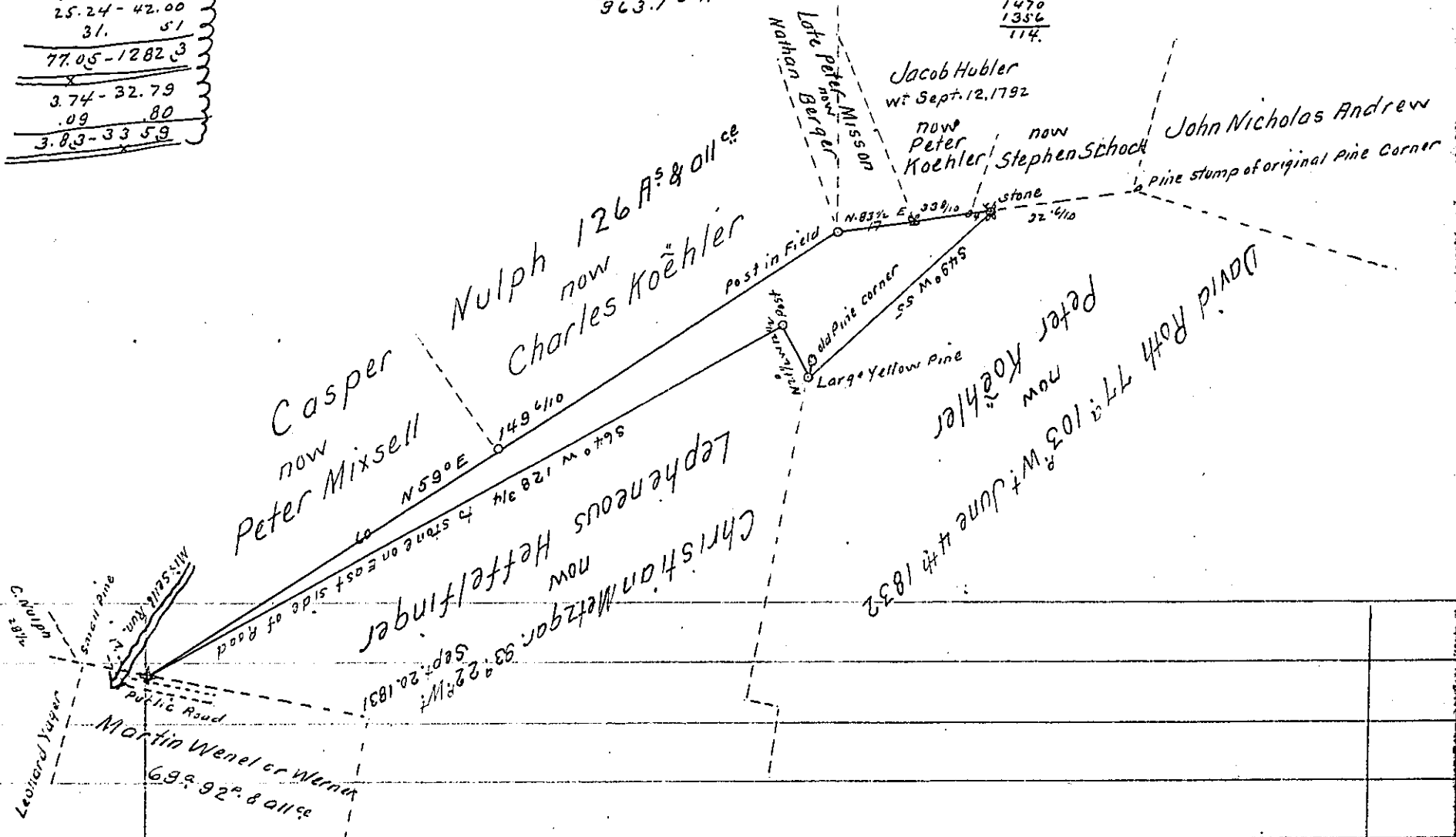
11.17-4.40
 47 18
 11.64 4.6
 43.84-89.88
 12.27-25.47
 22 - 23
 11. 23
 56.44 115.73
 51.50-85.72
 25.24-42.00
 31. 51
 77.05-1282.3
 3.74-32.79
 .09 80
 3.83-33.59

1664-E
 361-S
 1664
 9984
 4992
 6007.04 S

1203-E
 116
 7218
 1203
 1203
 139548-N

13944
 5229
 64234N
 77.1N
 12.5-E
 3885
 1542
 771
 963.7 S-N

2 2985.47
 169 1/10 1492 23 (8^{as} 128 P^s Allowance &c.
 1356 100
 136
 544
 40
 169 1/10 27760 (128 P^s
 169
 486
 339
 7470
 1356
 114.

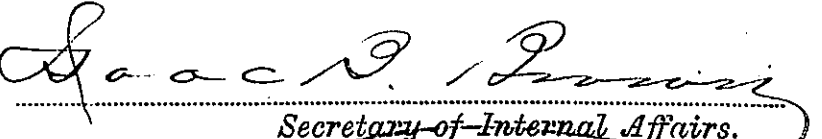


By Virtue of a Warrant dated the 13th day of July 1883. Surveyed the 17th day of November 1884 to Charles Koehler the above described Tract of Land situate in Ross Township, Monroe County. Containing Eight acres and One hundred and twenty eight perches and the Allowance of Six percent &c.

To Hon. J. Simpson Africa } Secretary of Internal Affairs }
 Geo. G. Shofer, C.S.

Scale 40 Perches to the Inch
 Bearings from Magnetic Meridian of date.

IN TESTIMONY that the above is a copy of the original remaining on file in the Department of Internal Affairs of Pennsylvania, made conformably to an Act of Assembly approved the 16th day of February, 1833, I have hereunto set my Hand and caused the Seal of said Department to be affixed at Harrisburg, this first day of August 1905.


 Secretary of Internal Affairs.